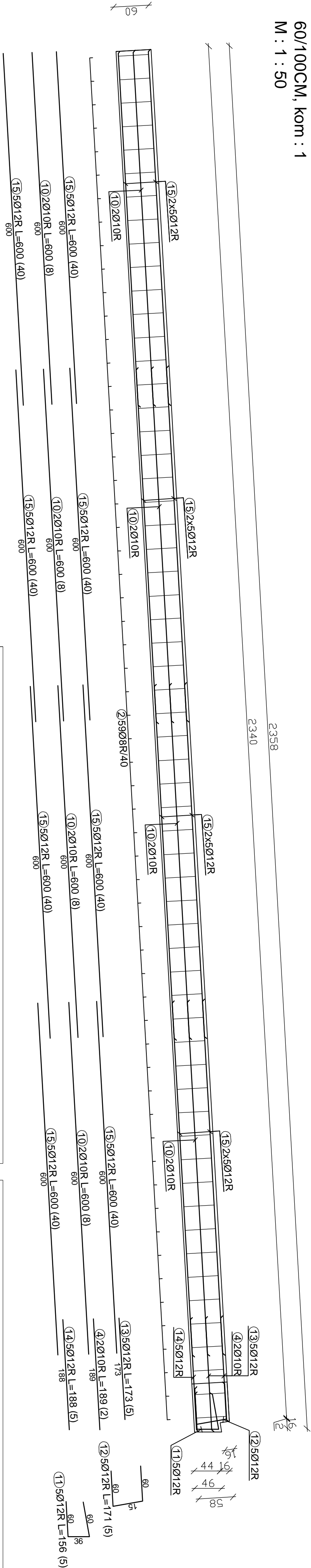
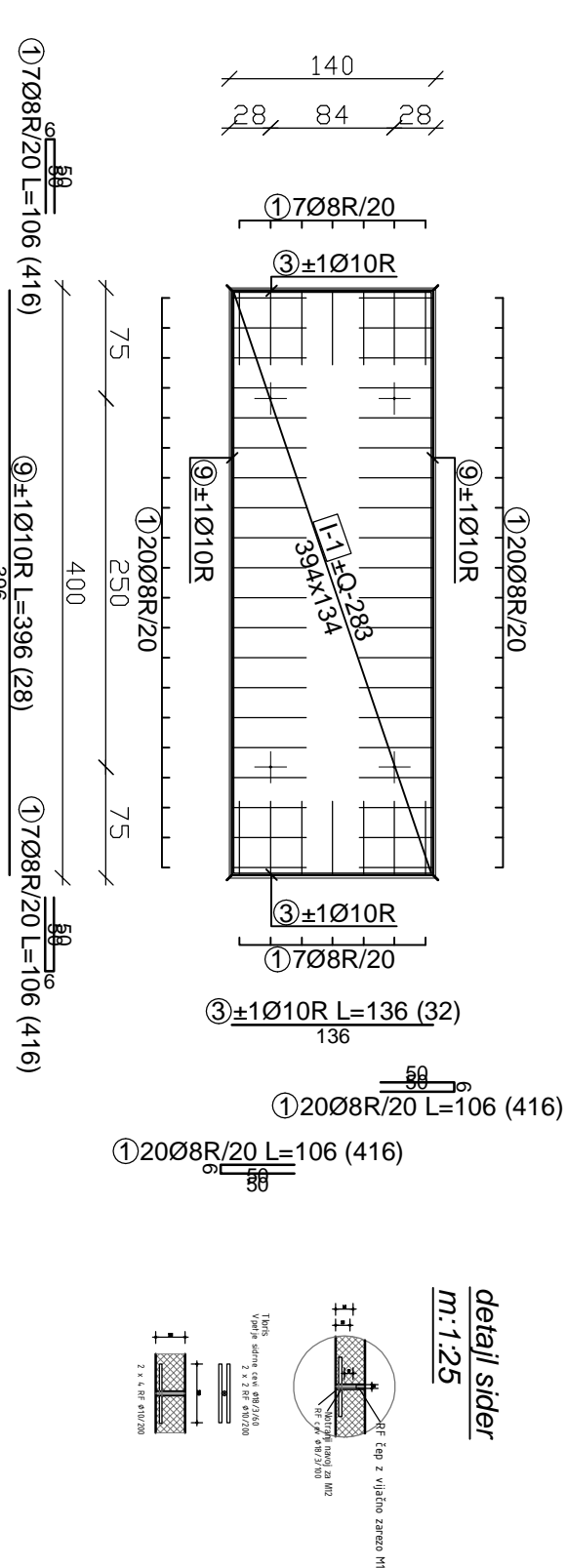


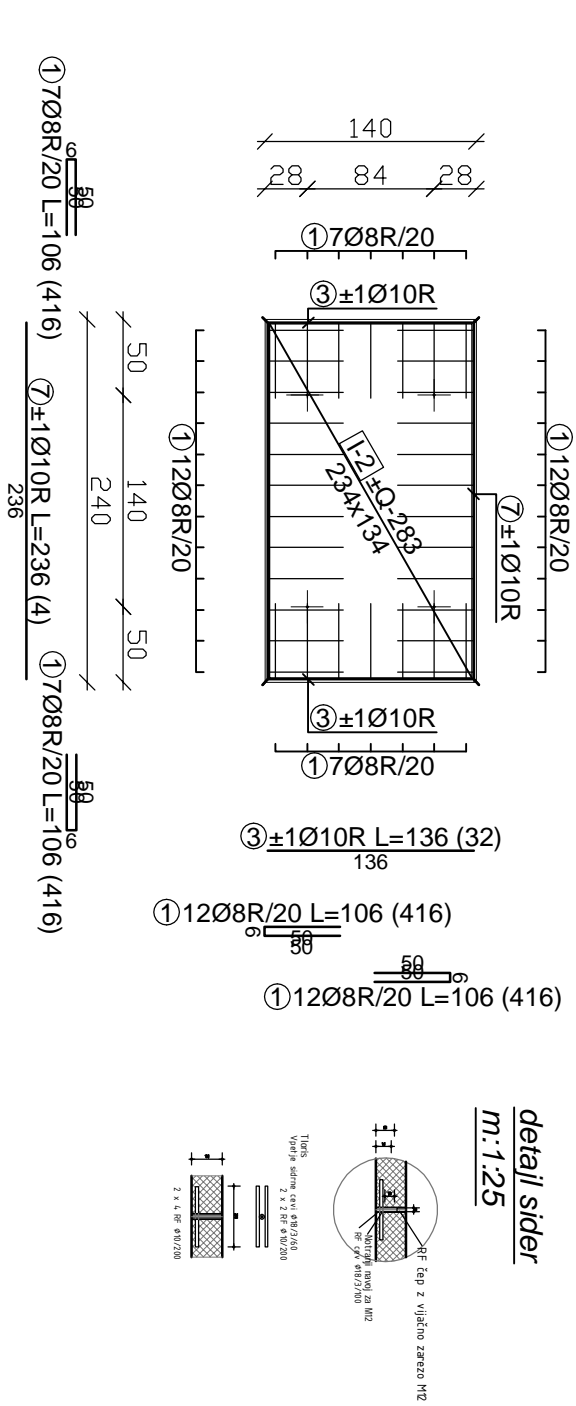
ARMATURA PASOVNEGA TEMELJA  
60/100CM, kom : 1  
M : 1 : 50

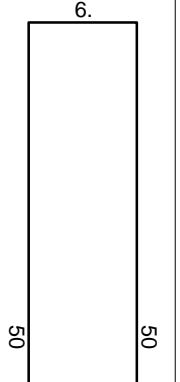
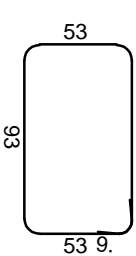
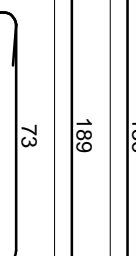
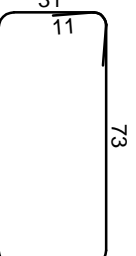
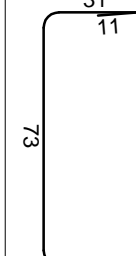
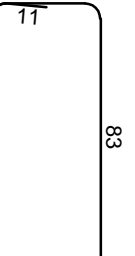
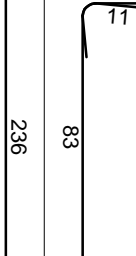
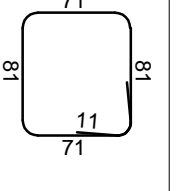
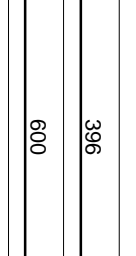
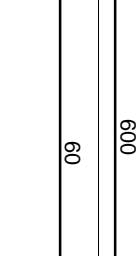
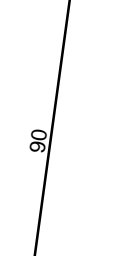
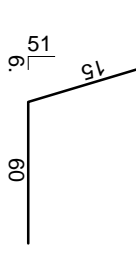

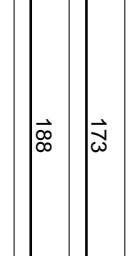
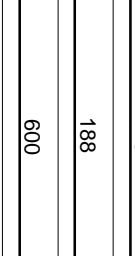


ARMATURA MONTAŽNIH PLOŠČ  
400/140/10CM, kom : 7  
M : 1 : 50 - zaščitni sloj betona 2.0cm  
beton C 30/37



ARMATURA MONTAŽNIH PLOŠČ  
240/140/10CM, kom : 1  
M : 1 : 50 - zaščitni sloj betona 2.0cm  
beton C 30/37

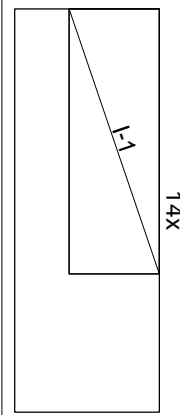
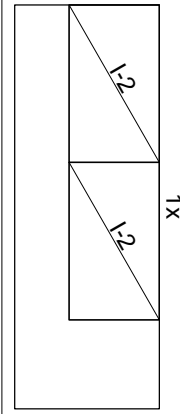


Palice - specifikacija					
ozn	oblika in mere [cm]	Ø	lg [m]	n [kos]	lgp [m]
VILA RAFUT - 03 POVEZOVALNA POT (1 kos)					
1		8	1.06	416	440.96
2		8	3.10	59	182.90
3		10	1.36	32	43.52
4		10	1.89	2	3.78
5		10	2.30	6	13.80
6		10	2.54	4	10.16
7		10	2.36	4	9.44
8		10	3.26	3	9.78
9		10	3.96	28	110.88
10		10	6.00	8	48.00
11		12	1.56	5	7.80
12		12	1.71	5	8.55
13		12	1.73	5	8.65
14		12	1.88	5	9.40
15		12	6.00	40	240.00

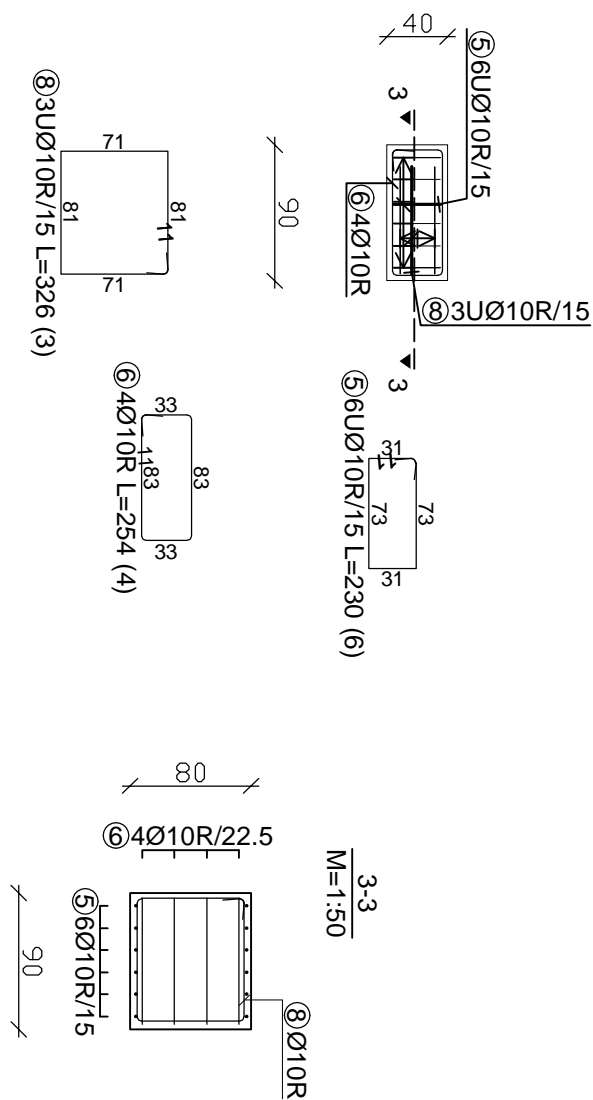
Palice - izvideček			
Ø [mm]	lgp [m]	Teža enote [kg/m]	Teža [kg]
RA1			
8		623.86	0.41
10		249.36	0.65
12		274.40	0.92
Skupaj (RA1)			669.44
Skupaj			669.44

Mreže - specifikacija					
Pozicija	Ozn mreže	B [cm]	L [cm]	n	Teža enote [kg/m2]
VILA RAFUT - 03 POVEZOVALNA POT (1 kos)					
I-1	Q-283	134	394	14	4.49
I-2	Q-283	134	234	2	4.49
Skupaj					360.11

Mreže - izvideček					
Ozn mreže	B [cm]	L [cm]	n	Teža enote [kg/m2]	Skupna teža [kg]
Q-283	215	600	15	4.49	869.01
Skupaj					869.01

Mreže - načrt razreza	
	Q-283 (600 cm x 215 cm)
	I-2 234 x 134 I-2 234 x 134

ARMATURA TOČKOVNEGA TEMELJA  
40/90/80CM, kom : 1  
M : 1 : 50



TEMELJUNA KONSTRUKCIJA  
BETON - C25/30 ZAŠČITNI SLOJ BETONA 3.5CM  
ARMATURA - S500

MONTAŽNE PLOŠČE  
BETON - C30/37, XC4, XF4  
ZAŠČITNI SLOJ BETONA 2 CM  
ARMATURA - S500

ARMATURA KONSTRUKCIJ  
POVEZOVALNE POTI  
M : 1 : 50

 Projektiranje, izvedba, svetovanje Tilušjska 3, 1000 Ljubljana tel.: 041 487 771 e-mail: info@piring.si		Naročnik: Mestna občina Nova Gorica Trg Edvarda Kardelja 1 5000 Nova Gorica	
Objekt: <b>Vila Rafut</b>	Faza: <b>PID</b>		
Opis: <b>Armaturni načrt</b>	Projekt št.: <b>8697</b>		
POVEZOVALNA POT - Temelj in podnožne plošče	Načrt št.: <b>8697 CK</b>		
Vodja projekta: <b>Urša Kranjc udlika ZARŠ 1671 PKA</b>	Datum: <b>August 2023</b>		
Pooblaščen inženir: <b>Vojko Prijevec udiig IZS G - 1613</b>	Mertilo: <b>1 : 50</b>		
		Lst: <b>03-01</b>	